

Figure S1. Flow gated strategy. Flow gated strategy for the expression of HLA-DR and CXCR3 on the surface of NK cells and their subpopulations in a randomly selected LTBI patient

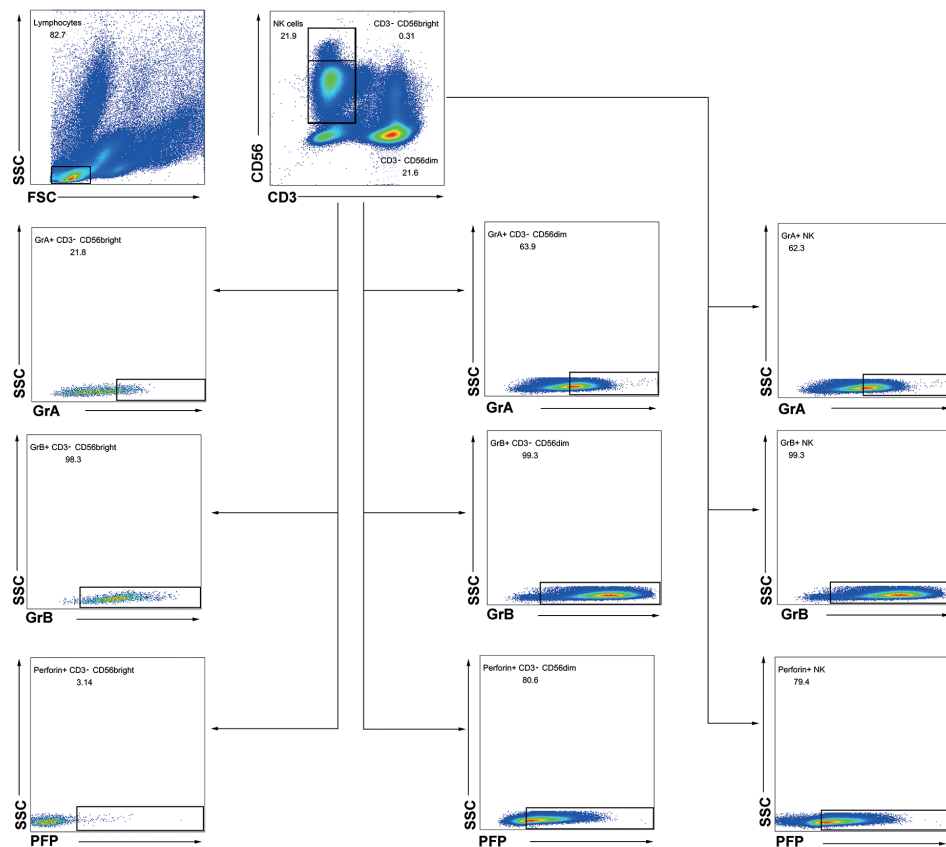


Figure S2. Flow gated strategy. Flow gating strategy for the expression of toxic particles in NK cells and their subsets in a randomly selected LTBI patient

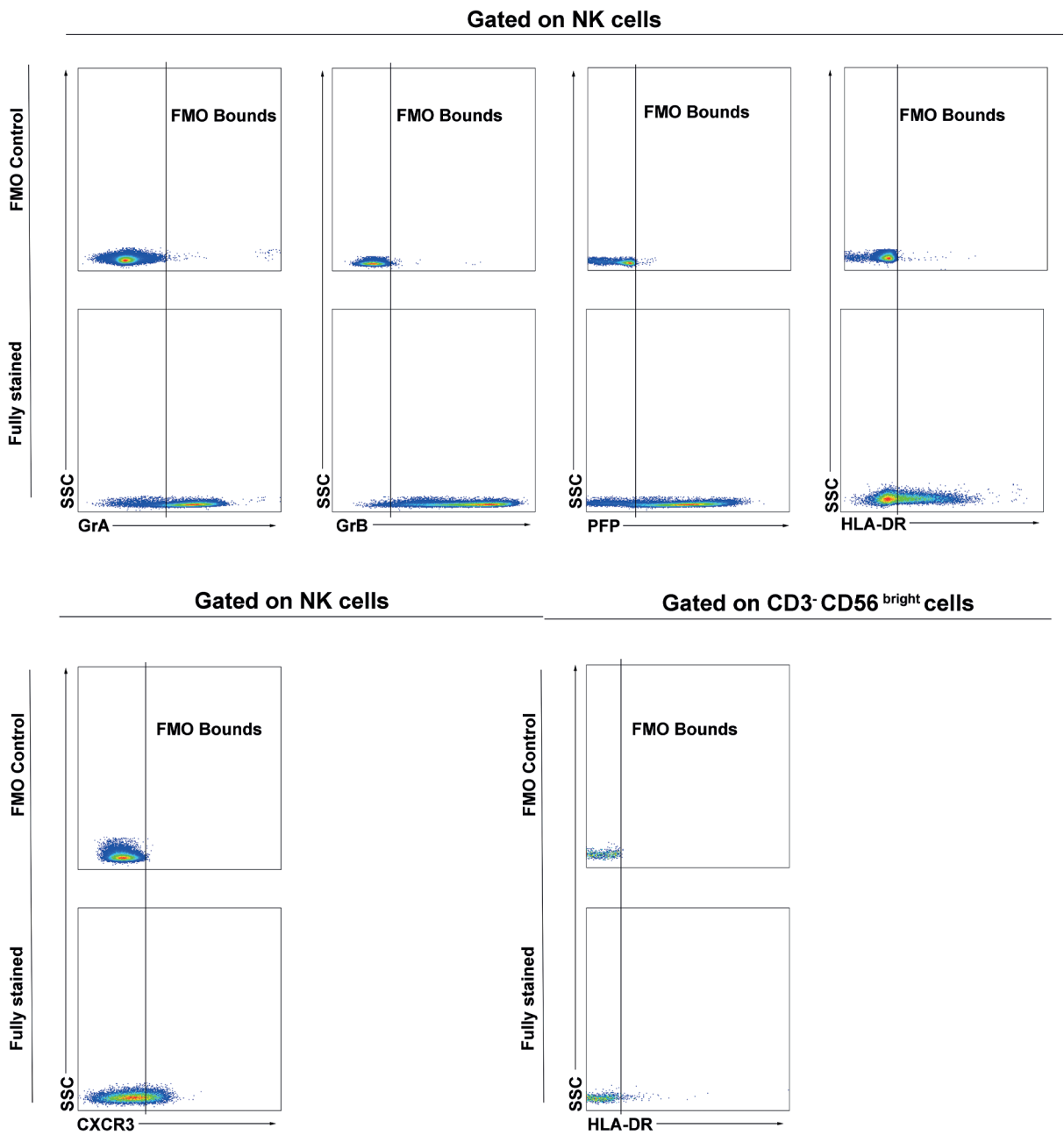


Figure S3. Minus One (FMO) staining for each marker