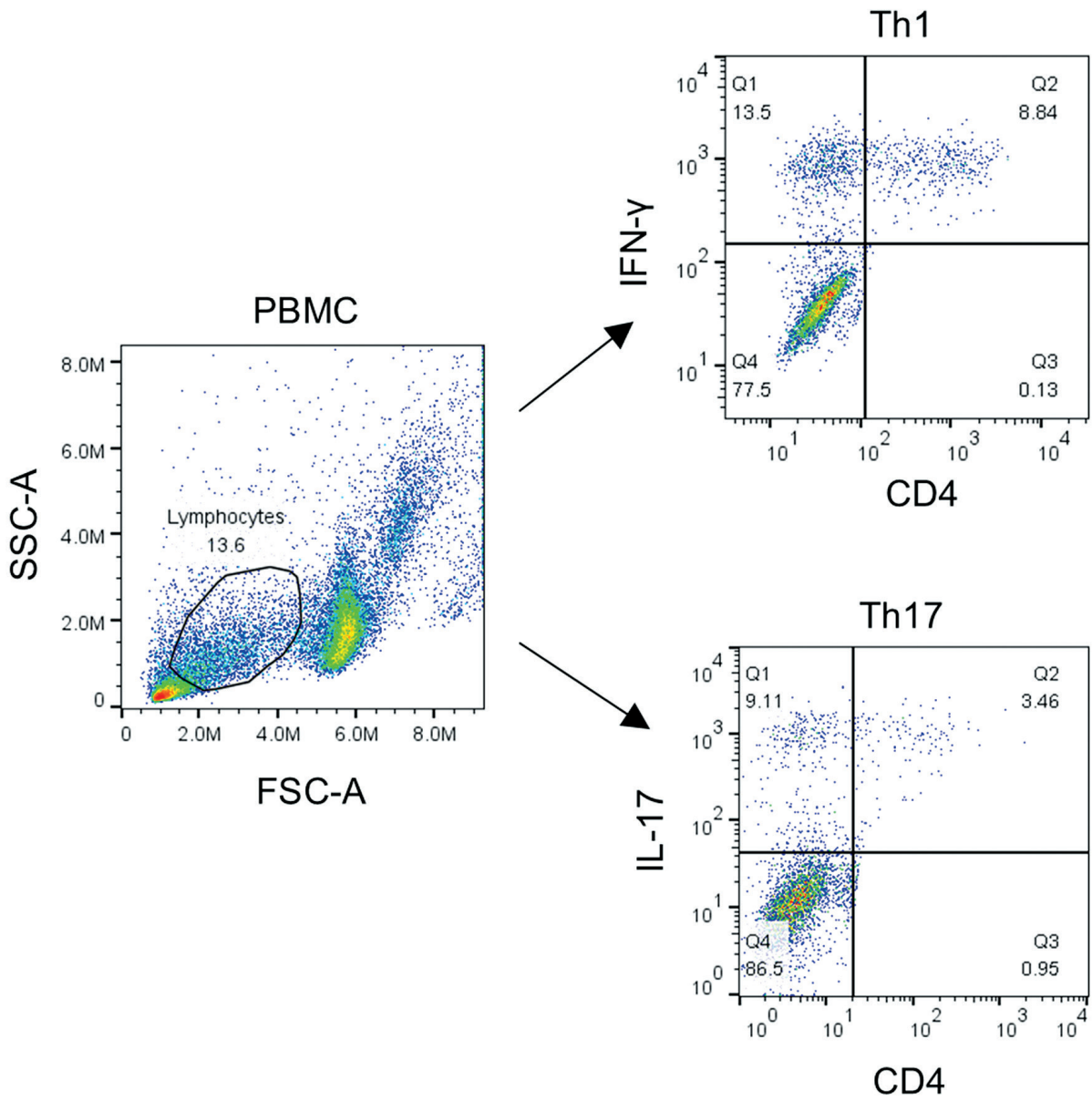


Supplementary Fig. 1. Isolation of CD4⁺ T cells and CD14⁺ monocytes. **A**) Flow cytometry analysis for assessing the purity of CD4⁺ T cells sorted from PBMCs of TB patients and healthy donors. **B**) RT-qPCR analysis of GLS1 mRNA levels in CD4⁺ T cells from TB patients and healthy donors. **C**) RT-qPCR analysis of GLS1 mRNA levels in TB or healthy PBMCs treated with or without H37Rv lysate. **D**) Flow cytometry analysis for determining the purity of CD14⁺ monocytes sorted from PBMCs of healthy donors. ** $p < 0.01$, *** $p < 0.001$



Supplementary Fig. 2. Gating strategy for CD4⁺IFN- γ ⁺ T cells and CD4⁺IL-17⁺ T cells



Supplementary Fig. 3. Original western blot images