

Supplementary Table 1. The abbreviations and corresponding full names involved in this article

Abbreviations	Full name	Abbreviations	Full name
ACC	Adrenocortical carcinoma	LUAD	Lung adenocarcinoma
BLCA	Bladder urothelial carcinoma	LUSC	Lung squamous cell carcinoma
BRCA	Breast invasive carcinoma	MESO	Mesothelioma
CESC	Cervical squamous cell carcinoma and endocervical adenocarcinoma	OV	Ovarian serous cystadenocarcinoma
CHOL	Cholangiocarcinoma	PAAD	Pancreatic adenocarcinoma
COAD	Colon adenocarcinoma	PCPG	Pheochromocytoma and paraganglioma
DLBC	Lymphoid neoplasm diffuse large B-cell lymphoma	PRAD	Prostate adenocarcinoma
ESCA	Esophageal carcinoma	READ	Rectum adenocarcinoma
GBM	Glioblastoma multiforme	SARC	Sarcoma
HNSC	Head and neck squamous cell carcinoma	SKCM	Skin cutaneous melanoma
KICH	Kidney chromophobe	STAD	Stomach adenocarcinoma
KIRC	Kidney renal clear cell carcinoma	TGCT	Testicular germ cell tumors
KIRP	Kidney renal papillary cell carcinoma	THCA	Thyroid carcinoma
LAML	Acute myeloid leukemia	THYM	Thymoma
LGG	Brain lower grade glioma	UCEC	Uterine corpus endometrial carcinoma
LIHC	Liver hepatocellular carcinoma	UCS	Uterine carcinosarcoma
		UVM	Uveal melanoma

Supplementary Table 2. Primers required for PRC1 complex members in q-PCR experiments

Target gene	Forward	Reverse
<i>BM11</i>	CCACCTGATGTGTGTGCTTTG	TTCAGTAGTGGTCTGGTCTTGT
<i>CBX2</i>	GCCCAGCACTGGACAGAAC	CACTGTGACGGTGATGAGGTT
<i>CBX4</i>	GCAGAGTGGAGTATCTGGTGA	AGCTTGGCACGGTTGTCAG
<i>CBX8</i>	ATGGAGCTTTCAGCGGTGG	ATGCGTCCTTCCGTATGCG
<i>L3MBTL2</i>	TGAGAGCAGCTCCTATCTGGA	TGTACCCACGATACCACACATC
<i>PHC1</i>	TTCCACCAATGGGAGTTCTAGC	GCACTGCTTGTCTGTTTATAAAGT
<i>PHC2</i>	AGGGAACGGAAACTCTGCTT	TCGATAACATGCGTCAGGATTTG
<i>PHC3</i>	TACAGTGGTTCAGACCGACAT	ACTGCTGTGTGACACTTCCTG
<i>RING1</i>	AGAATGCCAGCAAAACGTGG	AGATAGGGCACATGAGTTCTGA
<i>RNF2</i>	CAAACGGAACCAACCATTAAGC	CCACTTCTAAGGGCTGTGATG

Supplementary Table 3. The patients information in the q-PCR experiment

Patient ID	Age	Gender	Diagnosis	Stage	Outcome
1	76	Female	LIHC	IV	Stable
2	46	Female	THCA	I	Remission
3	36	Male	THCA	III	Progression
4	55	Male	LIHC	II	Remission
5	78	Female	PRAD	IV	Stable
6	74	Female	BRCA	III	Progression
7	64	Male	LIHC	II	Progression
8	64	Female	KIRC	II	Remission
9	65	Male	PRAD	III	Stable
10	52	Female	THCA	I	Remission
11	79	Male	THCA	II	Progression
12	69	Female	DLBC	III	Progression
13	46	Female	BRCA	II	Stable
14	31	Male	DLBC	III	Stable
15	50	Male	PRAD	I	Stable
16	66	Male	DLBC	I	Stable
17	70	Male	THCA	IV	Progression
18	43	Male	THCA	II	Stable
19	51	Female	THCA	II	Remission
20	44	Female	THCA	III	Progression
21	56	Female	LIHC	I	Progression
22	76	Female	LIHC	II	Remission
23	33	Male	LIHC	II	Progression
24	54	Male	LIHC	IV	Progression
25	68	Female	DLBC	III	Remission
26	53	Male	DLBC	III	Stable
27	46	Male	DLBC	IV	Stable
28	56	Male	PRAD	IV	Remission
29	76	Female	PRAD	II	Remission
30	46	Male	PRAD	I	Stable
31	30	Male	CESC	II	Stable
32	42	Male	CESC	III	Stable
33	78	Female	PRAD	I	Remission
34	65	Female	BRCA	IV	Remission
35	59	Female	PRAD	I	Progression
36	63	Male	THCA	IV	Stable
37	49	Female	KIRC	I	Progression
38	79	Female	THCA	I	Stable
39	61	Male	UCEC	II	Stable
40	56	Male	CESC	II	Progression
41	60	Female	KIRC	II	Progression

Supplementary Table 3. cont.

Patient ID	Age	Gender	Diagnosis	Stage	Outcome
42	44	Male	DLBC	IV	Progression
43	35	Male	LIHC	I	Stable
44	57	Male	LIHC	I	Stable
45	47	Female	LIHC	IV	Progression
46	79	Female	UCEC	I	Stable
47	63	Female	CESC	II	Remission
48	49	Male	CESC	IV	Stable
49	35	Female	BRCA	II	Remission
50	74	Female	LUAD	IV	Progression
51	54	Female	PRAD	IV	Stable
52	38	Female	ESCA	IV	Remission
53	73	Female	LUAD	IV	Stable
54	33	Female	UCEC	IV	Stable
55	71	Female	DLBC	IV	Remission
56	33	Male	UCEC	II	Remission
57	43	Female	BRCA	I	Stable
58	75	Female	PRAD	I	Remission
59	67	Female	DLBC	IV	Remission
60	36	Male	STAD	I	Stable
61	61	Female	LUAD	II	Remission
62	54	Male	CESC	IV	Progression
63	40	Female	UCEC	II	Stable
64	71	Male	UCEC	IV	Stable
65	43	Male	STAD	II	Remission
66	40	Female	LUAD	IV	Remission
67	50	Male	STAD	I	Progression
68	55	Female	BRCA	II	Remission
69	76	Male	LUAD	II	Progression
70	32	Female	UCEC	II	Remission
71	49	Female	BRCA	IV	Remission
72	72	Female	ESCA	II	Remission
73	77	Male	UCEC	II	Stable
74	47	Male	UCEC	IV	Stable
75	32	Male	STAD	I	Remission
76	61	Male	CESC	II	Stable
77	61	Female	BRCA	III	Progression
78	52	Male	DLBC	III	Progression
79	71	Female	STAD	III	Remission
80	52	Female	BRCA	III	Stable
81	64	Female	ESCA	IV	Stable
82	34	Male	COAD	III	Stable

Supplementary Table 3. Cont.

Patient ID	Age	Gender	Diagnosis	Stage	Outcome
83	50	Male	STAD	I	Progression
84	41	Female	ESCA	II	Remission
85	58	Female	COAD	IV	Stable
86	32	Female	KIRC	I	Remission
87	37	Female	ESCA	III	Progression
88	51	Female	KIRC	IV	Progression
89	47	Male	LUAD	III	Progression
90	63	Male	LUAD	II	Stable
91	74	Male	ESCA	IV	Progression
92	31	Male	KIRC	II	Remission
93	55	Male	LUAD	II	Remission
94	61	Male	COAD	IV	Remission
95	67	Male	LUAD	II	Progression
96	67	Male	COAD	III	Stable
97	70	Female	STAD	III	Remission
98	70	Male	CESC	II	Stable
99	56	Male	COAD	IV	Progression
100	44	Male	CESC	I	Stable
101	46	Male	LUAD	IV	Progression
102	55	Male	ESCA	I	Stable
103	75	Male	KIRC	I	Stable
104	36	Male	COAD	I	Progression
105	33	Male	STAD	II	Progression
106	51	Female	STAD	III	Stable
107	77	Male	ESCA	I	Remission
108	51	Male	KIRC	IV	Stable
109	40	Male	STAD	II	Progression
110	54	Female	COAD	IV	Progression
111	77	Male	CESC	IV	Remission
112	44	Female	KIRC	II	Remission
113	31	Female	COAD	I	Remission
114	33	Female	ESCA	IV	Stable
115	30	Female	ESCA	II	Remission
116	57	Male	KIRC	III	Stable
117	34	Male	COAD	III	Stable
118	54	Female	COAD	IV	Remission
119	66	Female	BRCA	II	Remission
120	39	Male	UCEC	IV	Progression

Supplementary Table 4. Cont.

Gene	Classification	Cancer type																		
		BLCA	BRCA	CESC	CHOL	COAD	ESCA	GBM	HNSC	KICH	KIRC	KIRP	LIHC	LUAD	LUSC	PCPG	PRAD	READ	STAD	THCA
PHC1	Unpaired samples	***	-	***	-	***	-	*	***	***	-	-	***	***	*	*	-	-	***	***
	Overexpressed categoric	Normal	-	Tumor	-	Tumor	Normal	Normal	Normal	Tumor	-	-	Normal	Normal	Tumor	Normal	-	-	Normal	Normal
	P-value	**	-	**	-	-	-	-	***	-	-	-	***	-	-	**	-	-	***	-
PHC2	Unpaired samples	***	-	***	***	***	***	***	***	***	-	***	**	***	*	-	**	***	***	***
	Overexpressed categoric	Normal	-	Tumor	-	Tumor	Normal	Normal	Normal	Tumor	-	Tumor	Normal	Normal	Normal	-	Tumor	Tumor	Tumor	Normal
	P-value	**	-	**	***	***	***	***	***	***	*	*	***	**	-	-	*	**	***	*
PHC3	Unpaired samples	*	-	***	*	-	***	***	*	*	-	***	-	***	-	-	***	***	***	***
	Overexpressed categoric	Normal	-	Tumor	Tumor	-	Tumor	Normal	Normal	Tumor	-	Tumor	-	Tumor	-	-	Tumor	Tumor	Normal	Normal
	P-value	-	-	**	***	**	-	***	***	***	-	*	***	-	***	-	-	-	***	***
RING1	Unpaired samples	-	-	***	-	***	-	***	***	-	-	***	-	-	*	-	*	-	***	***
	Overexpressed categoric	-	-	Tumor	-	Tumor	-	Tumor	Normal	Normal	-	Tumor	-	Tumor	-	Normal	Normal	-	Normal	Normal
	P-value	-	-	**	-	***	-	***	***	***	*	***	-	-	*	-	*	-	***	***
RNF2	Unpaired samples	**	***	***	***	***	**	***	***	**	-	***	***	***	-	-	-	***	***	-
	Overexpressed categoric	Tumor	-	Tumor	Tumor	Tumor	Tumor	Normal	Normal	Tumor	-	Tumor	Tumor	Tumor	-	Normal	Normal	-	Normal	Normal
	P-value	***	-	**	**	***	-	***	***	***	-	***	***	***	-	*	-	***	***	*

Differential analysis was performed for each gene in both paired and unpaired samples. *p-value < 0.05, **p-value < 0.01, ***p-value < 0.001, - represents the difference of the p-value value was not statistically significant. The abbreviations involved in this table are explained specifically in Supplementary Table 1.

Supplementary Table 5. The Cox analysis of the polycomb-repressive complex 1 (PRC1) in colorectal cancer

Gene	Dataset	Cancer type	Endpoint	Number	COX <i>p</i> -value	HR	95% CI (low-high)
<i>BMI1</i>	GSE17537	Colorectal cancer	Overall survival	55	0.00706	3.96	1.45-10.76
<i>BMI1</i>	GSE17537	Colorectal cancer	Disease specific survival	49	0.004664	6.6	1.79-24.37
<i>BMI1</i>	GSE17537	Colorectal cancer	Disease free survival	55	0.001177	6.38	2.08-19.57
<i>CBX2</i>	GSE17536	Colorectal cancer	Overall survival	177	0.000595	0.11	0.03-0.39
<i>CBX2</i>	GSE17537	Colorectal cancer	Overall survival	55	0.004173	0.02	0.00-0.28
<i>CBX2</i>	GSE17536	Colorectal cancer	Disease specific survival	177	0.001444	0.09	0.02-0.40
<i>CBX2</i>	GSE17537	Colorectal cancer	Disease specific survival	49	0.001359	0	0.00-0.09
<i>CBX2</i>	GSE17536	Colorectal cancer	Disease free survival	145	0.029883	0.14	0.02-0.83
<i>CBX2</i>	GSE17537	Colorectal cancer	Disease free survival	55	0.003171	0.01	0.00-0.20
<i>CBX4</i>	GSE17536	Colorectal cancer	Disease free survival	145	0.006995	5.01	1.55-16.16
<i>CBX4</i>	GSE17536	Colorectal cancer	Disease free survival	145	0.003917	2.84	1.40-5.77
<i>CBX4</i>	GSE14333	Colorectal cancer	Disease free survival	226	0.030065	1.78	1.06-3.01
<i>L3MBTL2</i>	GSE17536	Colorectal cancer	Overall survival	177	0.005264	0.1	0.02-0.50
<i>L3MBTL2</i>	GSE17536	Colorectal cancer	Disease specific survival	177	0.029475	0.12	0.02-0.81
<i>L3MBTL2</i>	GSE14333	Colorectal cancer	Disease free survival	226	0.007699	0.33	0.14-0.74
<i>PHC1</i>	GSE17536	Colorectal cancer	Disease specific survival	177	0.017452	2.03	1.13-3.63
<i>PHC1</i>	GSE17537	Colorectal cancer	Disease free survival	55	0.005305	6.38	1.73-23.47
<i>PHC3</i>	GSE17536	Colorectal cancer	Overall survival	177	0.043418	1.98	1.02-3.83
<i>PHC3</i>	GSE17536	Colorectal cancer	Overall survival	177	0.015201	1.88	1.13-3.14
<i>PHC3</i>	GSE17537	Colorectal cancer	Disease specific survival	49	0.027666	2.29	1.10-4.80
<i>PHC3</i>	GSE17536	Colorectal cancer	Disease specific survival	177	0.016233	2.28	1.16-4.45
<i>PHC3</i>	GSE17537	Colorectal cancer	Disease specific survival	49	0.031547	0.04	0.00-0.74
<i>PHC3</i>	GSE17537	Colorectal cancer	Disease free survival	55	0.018048	0.03	0.00-0.56
<i>RNF2</i>	GSE17536	Colorectal cancer	Disease free survival	145	0.043214	4.1	1.04-16.08

Supplementary Table 6. The Cox analysis of the polycomb-repressive complex 1 (PRC1) in lung cancer

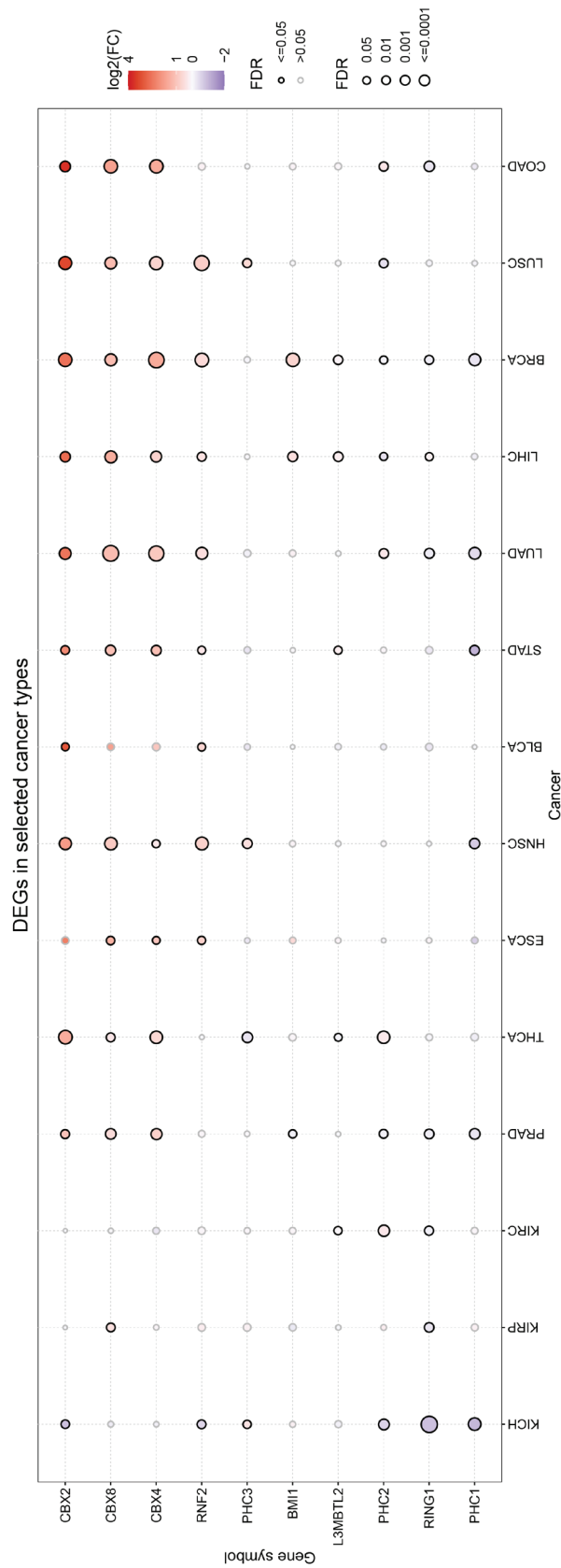
Gene	Dataset	Cancer type	Endpoint	Number	COX <i>p</i> -value	HR	95% CI (low-high)
<i>BMI1</i>	GSE4716-GPL3694	Lung cancer	Overall survival	50	0.006649	5.31	1.59-17.75
<i>BMI1</i>	jacob-00182-CANDF	Lung cancer	Overall survival	82	0.021212	0.4	0.19-0.87
<i>CBX2</i>	jacob-00182-MSK	Lung cancer	Overall survival	104	0.030505	3.61	1.13-11.54
<i>CBX2</i>	GSE31210	Lung cancer	Relapse free survival	204	0.030941	0.65	0.45-0.96
<i>CBX4</i>	jacob-00182-MSK	Lung cancer	Overall survival	104	0.04031	2.54	1.04-6.20
<i>CBX8</i>	GSE31210	Lung cancer	Relapse free survival	204	0.023047	1.61	1.07-2.42
<i>PHC1</i>	GSE13213	Lung cancer	Overall survival	117	0.009324	1.76	1.15-2.71
<i>PHC1</i>	GSE4573	Lung cancer	Overall survival	129	0.040496	0.55	0.31-0.97
<i>PHC1</i>	GSE31210	Lung cancer	Overall survival	204	0.016484	0.29	0.10-0.80
<i>PHC1</i>	GSE31210	Lung cancer	Relapse free survival	204	0.000084	0.23	0.11-0.47
<i>PHC1</i>	GSE31210	Lung cancer	Relapse free survival	204	0.002193	0.18	0.06-0.54
<i>PHC1</i>	jacob-00182-MSK	Lung cancer	Overall survival	104	0.000018	0.16	0.07-0.37
<i>PHC2</i>	GSE31210	Lung cancer	Overall survival	204	0.011751	4.4	1.39-13.94
<i>PHC2</i>	GSE31210	Lung cancer	Relapse free survival	204	0.003856	3.71	1.52-9.02
<i>PHC2</i>	GSE3141	Lung cancer	Overall survival	111	0.001673	2.9	1.49-5.64
<i>PHC3</i>	jacob-00182-CANDF	Lung cancer	Overall survival	82	0.030747	6.7	1.19-37.65
<i>PHC3</i>	GSE13213	Lung cancer	Overall survival	117	0.000887	2.76	1.52-5.02
<i>PHC3</i>	GSE31210	Lung cancer	Relapse free survival	204	0.04646	0.6	0.36-0.99
<i>PHC3</i>	GSE31210	Lung cancer	Overall survival	204	0.026984	0.5	0.27-0.92
<i>PHC3</i>	GSE31210	Lung cancer	Relapse free survival	204	0.014609	0.34	0.15-0.81
<i>PHC3</i>	GSE3141	Lung cancer	Overall survival	111	0.00821	0.25	0.09-0.70
<i>PHC3</i>	GSE31210	Lung cancer	Overall survival	204	0.032948	0.19	0.04-0.87
<i>PHC3</i>	GSE31210	Lung cancer	Overall survival	204	0.003217	0.18	0.06-0.57
<i>PHC3</i>	jacob-00182-MSK	Lung cancer	Overall survival	104	0.009691	0.08	0.01-0.54
<i>RING1</i>	jacob-00182-HLM	Lung cancer	Overall survival	79	0.027878	0.32	0.11-0.88
<i>RING1</i>	jacob-00182-MSK	Lung cancer	Overall survival	104	0.020942	0.3	0.11-0.83
<i>RNF2</i>	GSE13213	Lung cancer	Overall survival	117	0	3.16	2.06-4.85
<i>RNF2</i>	GSE31210	Lung cancer	Relapse free survival	204	0.019654	2.76	1.18-6.49
<i>RNF2</i>	GSE13213	Lung cancer	Overall survival	117	0.001662	2.01	1.30-3.11

Supplementary Table 7. The Cox analysis of the polycomb-repressive complex 1 (PRC1) in breast cancer

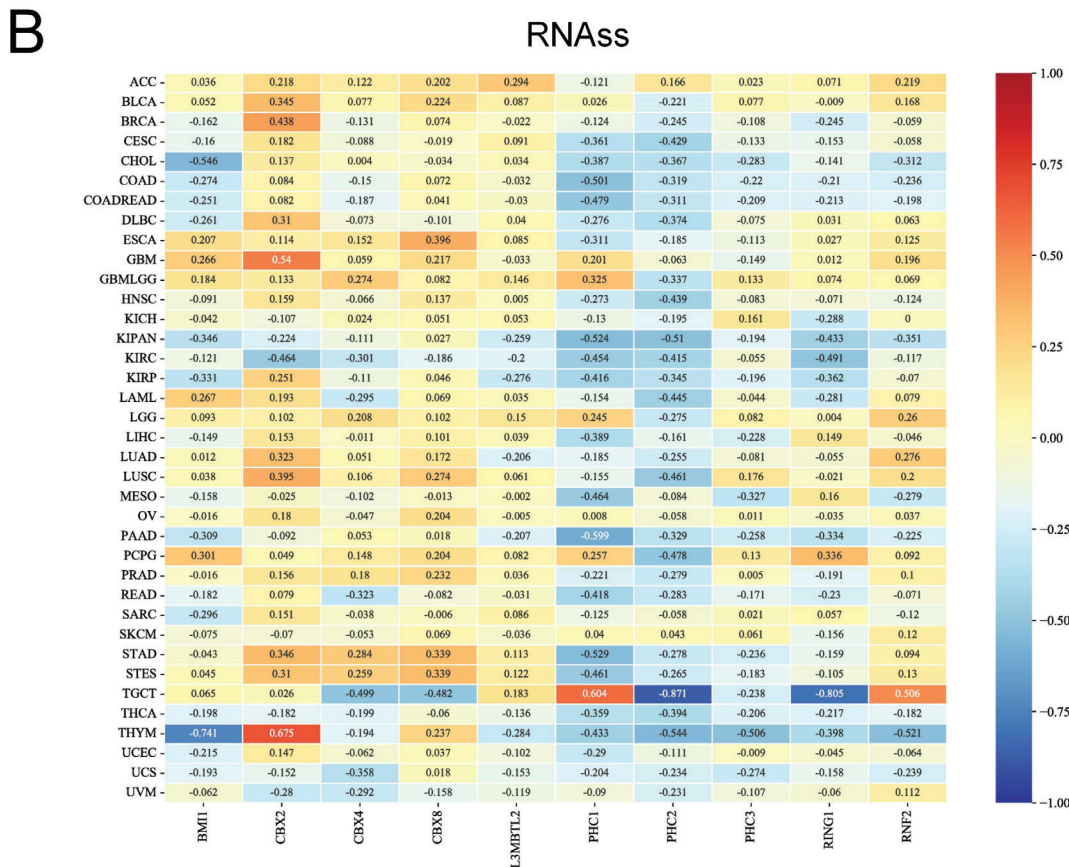
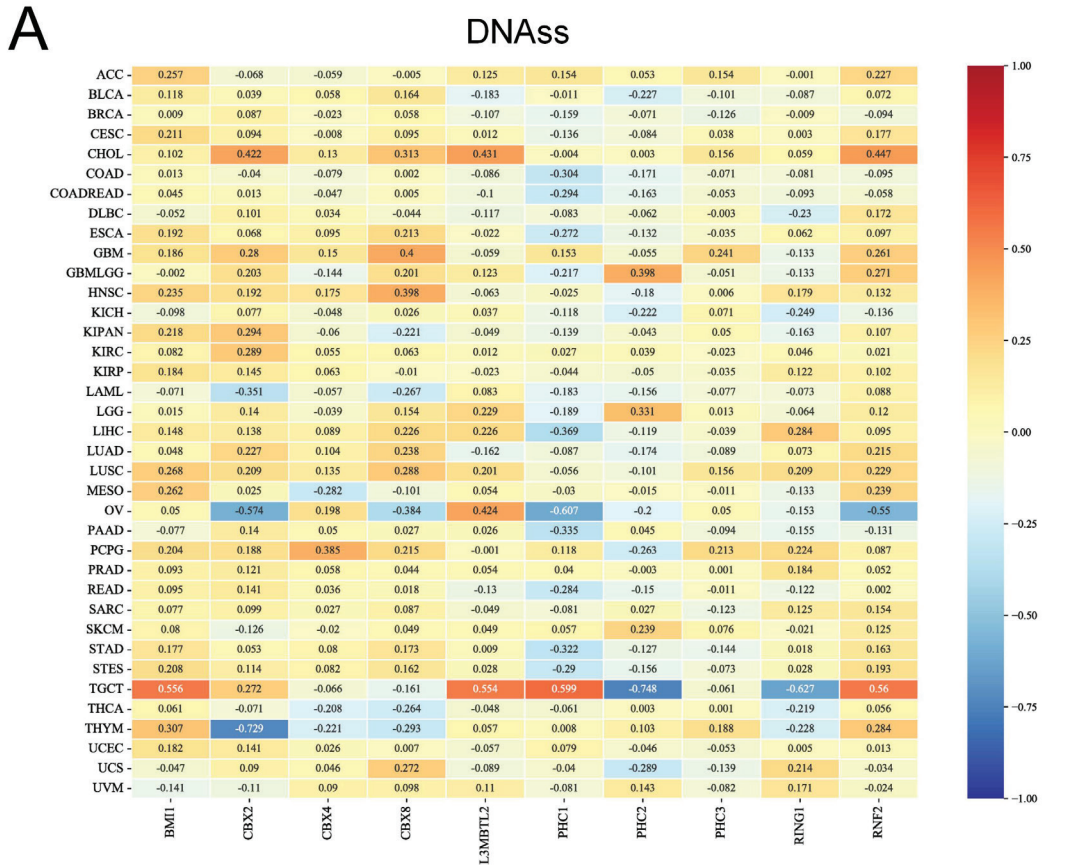
Gene	Dataset	Cancer type	Endpoint	Number	COX <i>p</i> -value	HR	95% CI (low-high)
<i>BM11</i>	GSE9893	Breast cancer	Overall survival	155	0.011697	1.22	1.04-1.42
<i>BM11</i>	GSE1456-GPL96	Breast cancer	Relapse free survival	159	0.032357	0.57	0.34-0.95
<i>BM11</i>	GSE2990	Breast cancer	Distant metastasis free survival	54	0.04234	0.39	0.16-0.97
<i>BM11</i>	GSE6532-GPL570	Breast cancer	Relapse free survival	87	0.002199	0.27	0.12-0.63
<i>BM11</i>	GSE6532-GPL570	Breast cancer	Distant metastasis free survival	87	0.002199	0.27	0.12-0.63
<i>CBX2</i>	GSE19615	Breast cancer	Distant metastasis free survival	115	0.005267	3.77	1.48-9.59
<i>CBX2</i>	GSE19615	Breast cancer	Distant metastasis free survival	115	0.012158	2.37	1.21-4.66
<i>CBX2</i>	GSE1456-GPL97	Breast cancer	Disease specific survival	159	0.011607	2.3	1.20-4.38
<i>CBX2</i>	GSE1456-GPL97	Breast cancer	Relapse free survival	159	0.00428	2.26	1.29-3.96
<i>CBX2</i>	GSE1378	Breast cancer	Relapse free survival	60	0.000479	1.94	1.34-2.82
<i>CBX2</i>	GSE1379	Breast cancer	Relapse free survival	60	0.00109	1.89	1.29-2.76
<i>CBX2</i>	GSE1456-GPL97	Breast cancer	Disease specific survival	159	0.001165	1.69	1.23-2.32
<i>CBX2</i>	GSE3494-GPL96	Breast cancer	Disease specific survival	236	0.017668	1.64	1.09-2.46
<i>CBX2</i>	GSE1456-GPL97	Breast cancer	Relapse free survival	159	0.000584	1.62	1.23-2.13
<i>CBX2</i>	GSE1456-GPL97	Breast cancer	Overall survival	159	0.022266	1.4	1.05-1.87
<i>CBX2</i>	GSE3494-GPL97	Breast cancer	Disease specific survival	236	0.041119	1.33	1.01-1.74
<i>CBX2</i>	GSE7390	Breast cancer	Overall survival	198	0.015505	1.31	1.05-1.62
<i>CBX2</i>	GSE12276	Breast cancer	Relapse free survival	204	0.000675	1.29	1.11-1.49
<i>CBX2</i>	GSE7390	Breast cancer	Distant metastasis free survival	198	0.031218	1.26	1.02-1.56
<i>CBX4</i>	GSE12276	Breast cancer	Relapse free survival	204	0.005591	0.8	0.68-0.94
<i>CBX4</i>	GSE12276	Breast cancer	Relapse free survival	204	0.006291	0.66	0.49-0.89
<i>CBX4</i>	GSE9893	Breast cancer	Overall survival	155	0.000071	0.63	0.51-0.79
<i>CBX8</i>	GSE1379	Breast cancer	Relapse free survival	60	0.04723	2.62	1.01-6.79
<i>CBX8</i>	GSE4922-GPL96	Breast cancer	Disease free survival	249	0.03819	1.44	1.02-2.03
<i>CBX8</i>	GSE2034	Breast cancer	Distant metastasis free survival	286	0.028153	1.39	1.04-1.87
<i>CBX8</i>	GSE9893	Breast cancer	Overall survival	155	0.001675	1.26	1.09-1.46

Supplementary Table 7. Cont.

Gene	Dataset	Cancer type	Endpoint	Number	COX <i>p</i> -value	HR	95% CI (low-high)
<i>L3MBTL2</i>	GSE19615	Breast cancer	Distant metastasis free survival	115	0.044224	10.58	1.06-105.25
<i>L3MBTL2</i>	GSE3494-GPL97	Breast cancer	Disease specific survival	236	0.046963	2.38	1.01-5.61
<i>PHC1</i>	GSE4922-GPL96	Breast cancer	Disease free survival	249	0.003747	0.49	0.31-0.80
<i>PHC1</i>	GSE11121	Breast cancer	Distant metastasis free survival	200	0.009333	0.47	0.27-0.83
<i>PHC1</i>	GSE3494-GPL96	Breast cancer	Disease specific survival	236	0.009334	0.44	0.24-0.82
<i>PHC1</i>	GSE12093	Breast cancer	Distant metastasis free survival	136	0.003287	0.37	0.19-0.72
<i>PHC3</i>	GSE19615	Breast cancer	Distant metastasis free survival	115	0.033261	48.25	1.36-1711.78
<i>PHC3</i>	GSE9195	Breast cancer	Distant metastasis free survival	77	0.040164	5.21	1.08-25.16
<i>PHC3</i>	GSE9195	Breast cancer	Relapse free survival	77	0.031928	4.48	1.14-17.60
<i>PHC3</i>	GSE1456-GPL97	Breast cancer	Relapse free survival	159	0.013371	0.29	0.11-0.77
<i>PHC3</i>	GSE3494-GPL97	Breast cancer	Disease specific survival	236	0.045063	0.28	0.08-0.97
<i>PHC3</i>	GSE1456-GPL97	Breast cancer	Disease specific survival	159	0.016501	0.25	0.08-0.77
<i>PHC3</i>	GSE1379	Breast cancer	Relapse free survival	60	0.006633	0	0.00-0.17
<i>RING1</i>	E-TABM-158	Breast cancer	Distant metastasis free survival	117	0.035061	3.48	1.09-11.11
<i>RING1</i>	GSE9893	Breast cancer	Overall survival	155	0.008163	1.32	1.07-1.62
<i>RING1</i>	GSE12276	Breast cancer	Relapse free survival	204	0.018513	0.51	0.29-0.89
<i>RNF2</i>	GSE19615	Breast cancer	Distant metastasis free survival	115	0.047801	3.69	1.01-13.44
<i>RNF2</i>	GSE4922-GPL96	Breast cancer	Disease free survival	249	0.011044	0.68	0.51-0.92

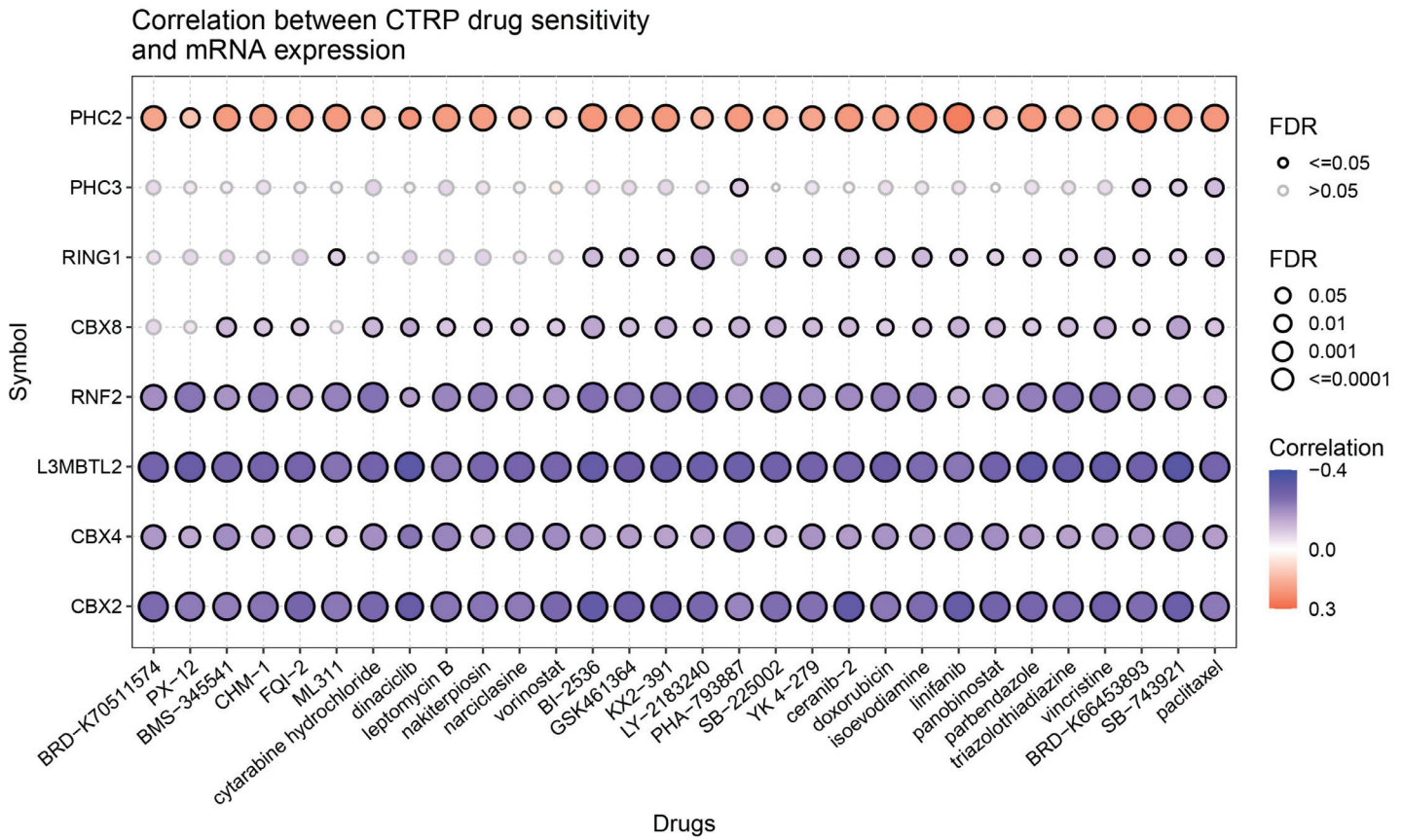


Supplementary Fig. 1. Tumors with differential expression of PRC1 complex in TCGA database

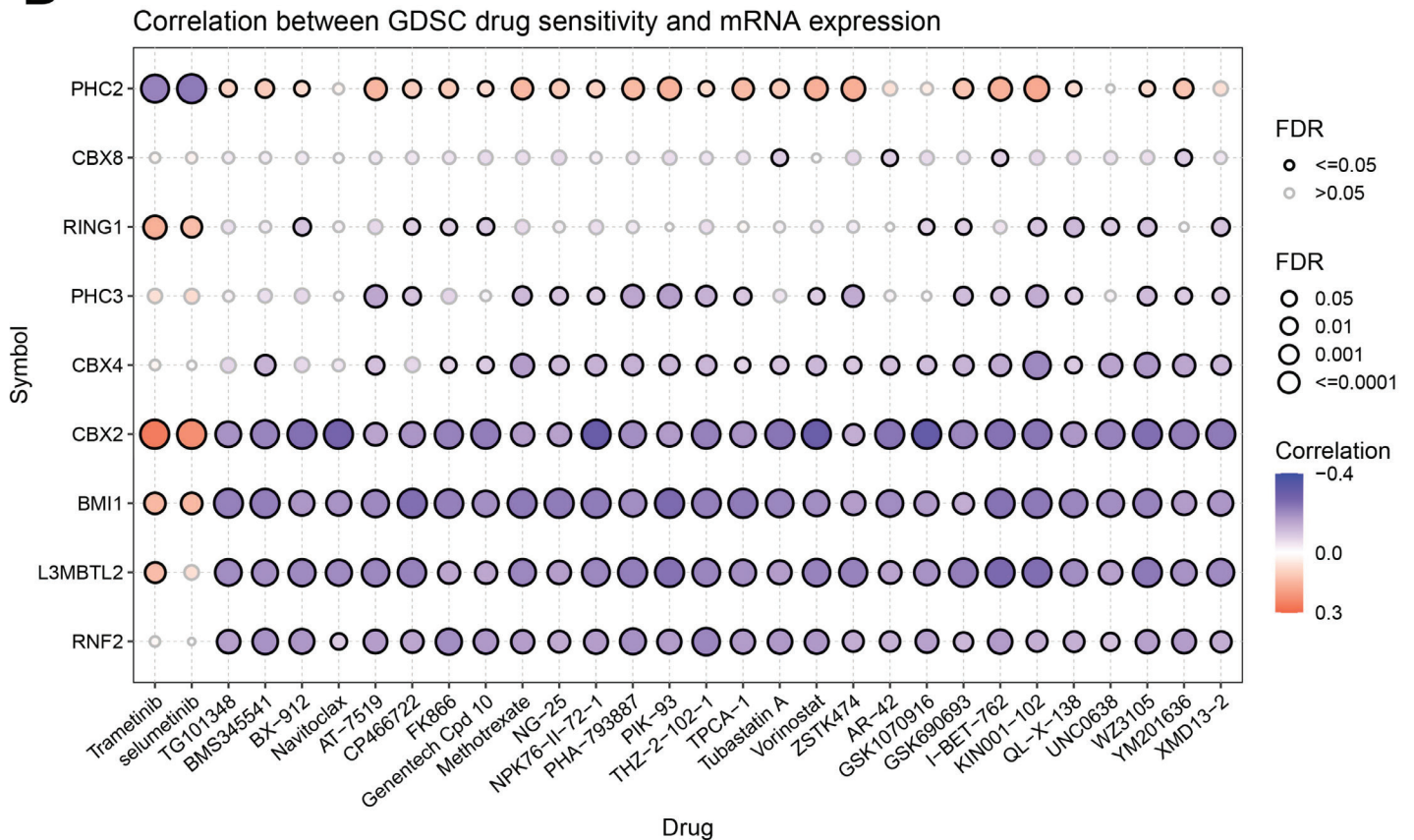


Supplementary Fig. 3. The correlation between PRC1 expression and DNAss and RNAss

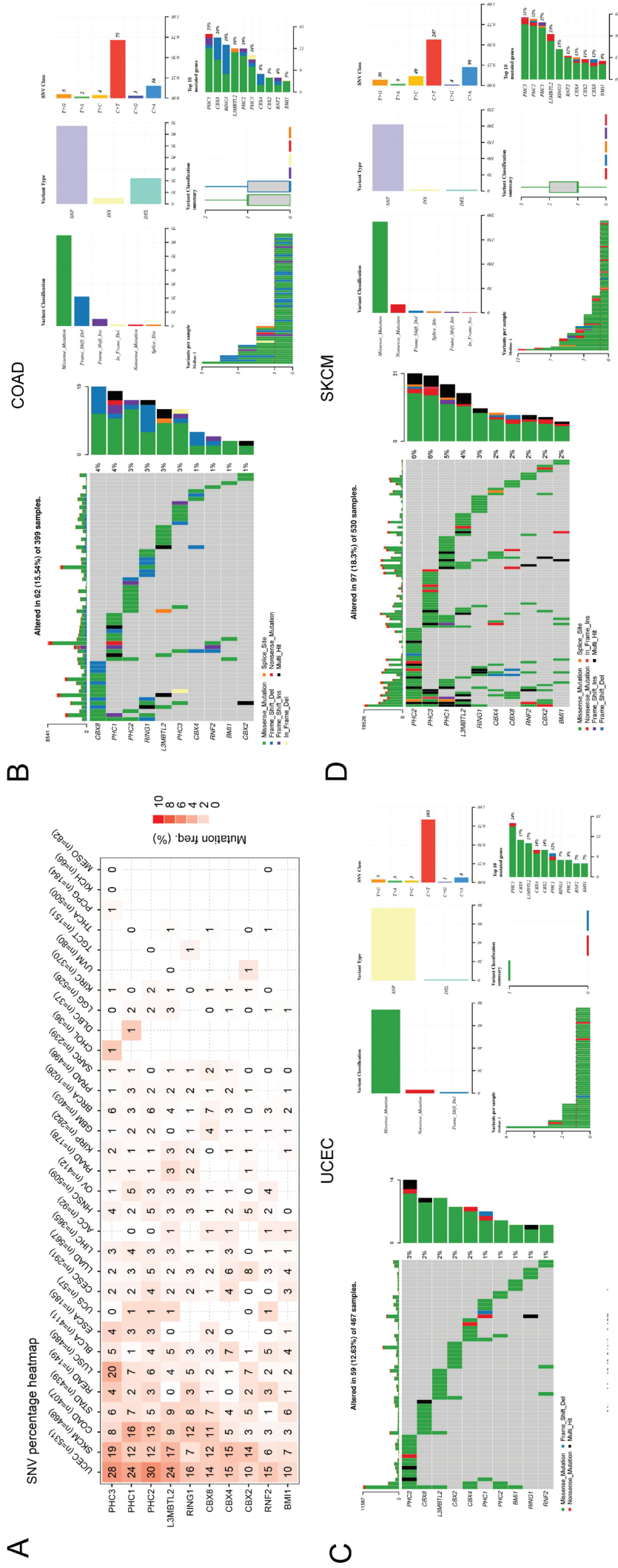
A



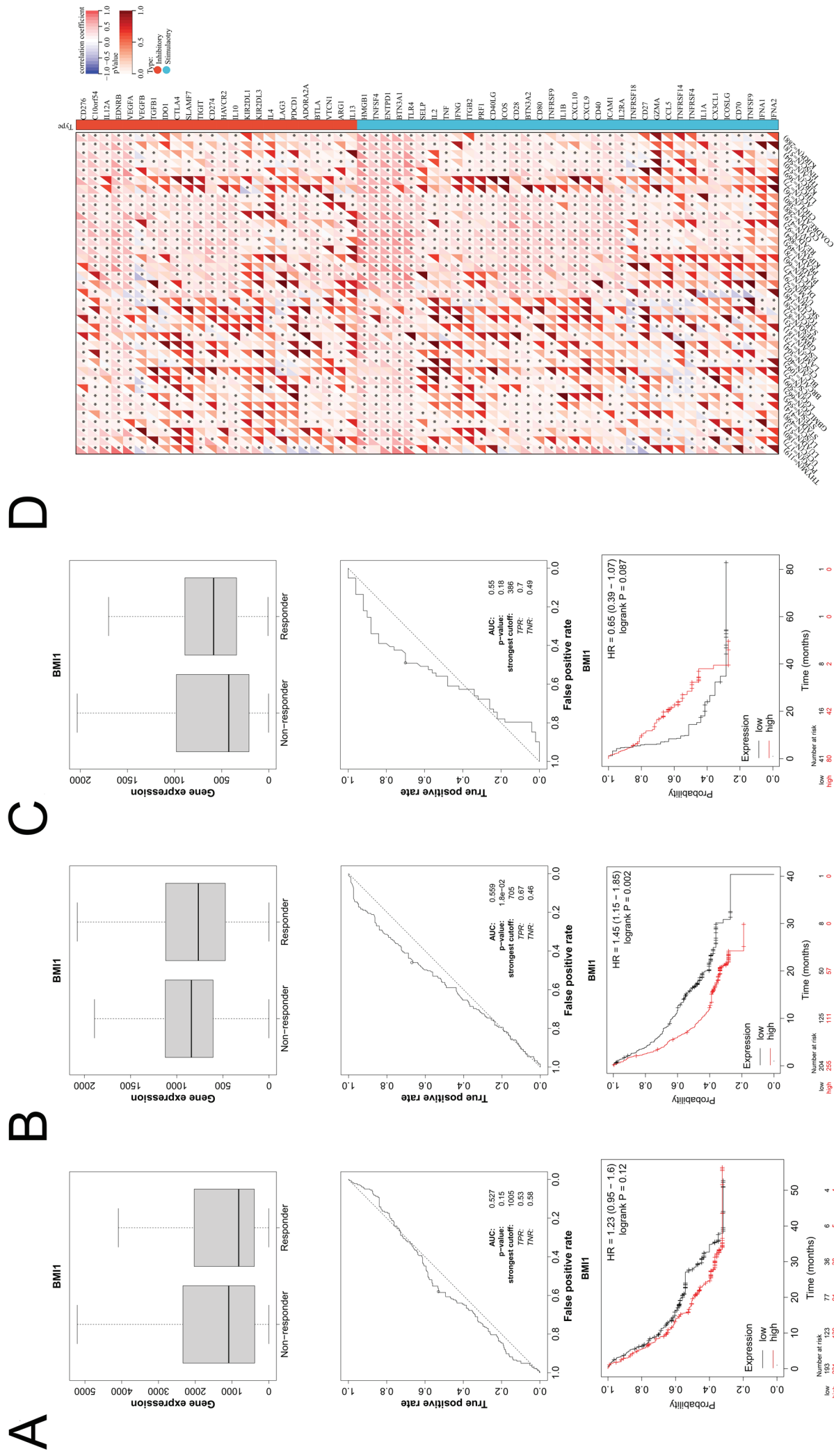
B



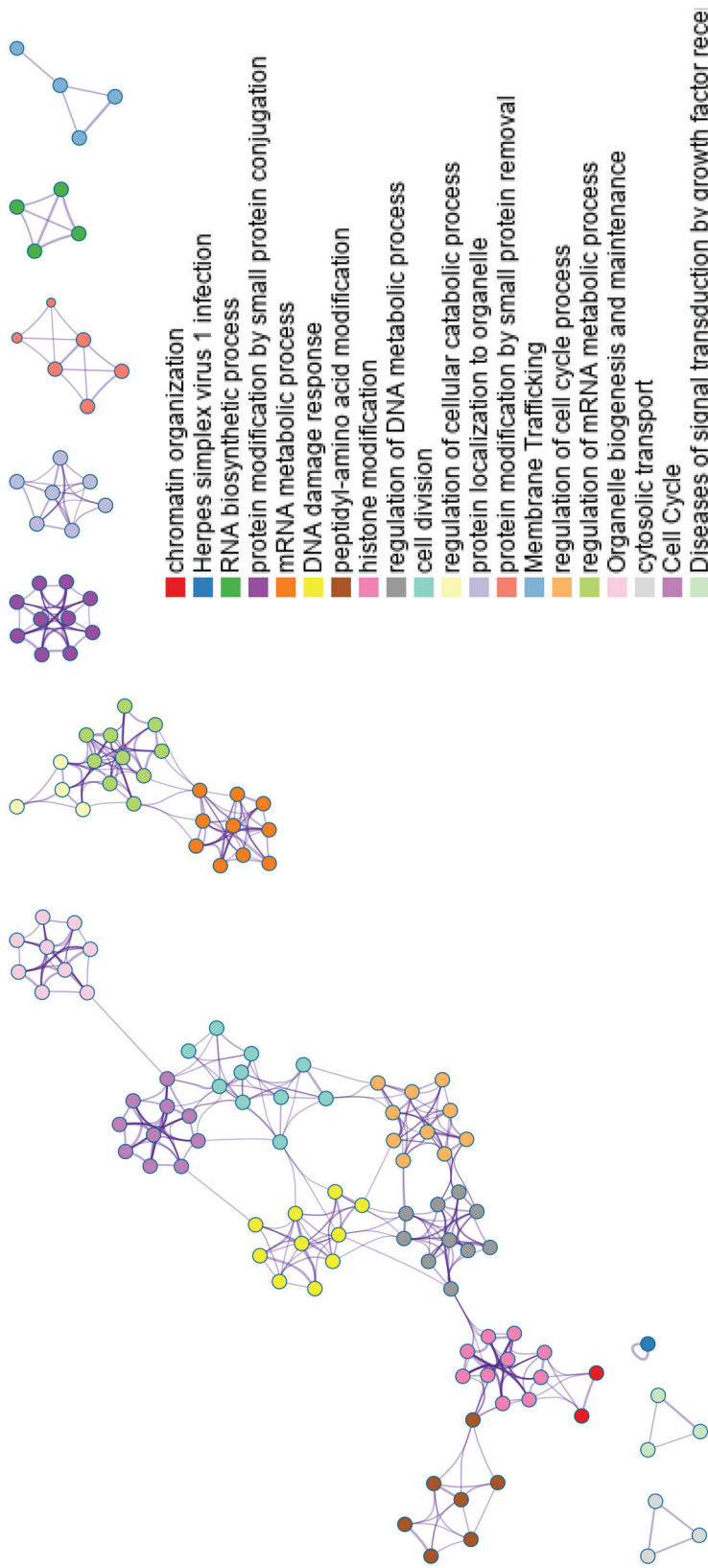
Supplementary Fig. 4. The drug sensitivity analysis of PRC1



Supplementary Fig. 5. The SNV alteration, subtypes and distributions of PRC1 in pan-cancer



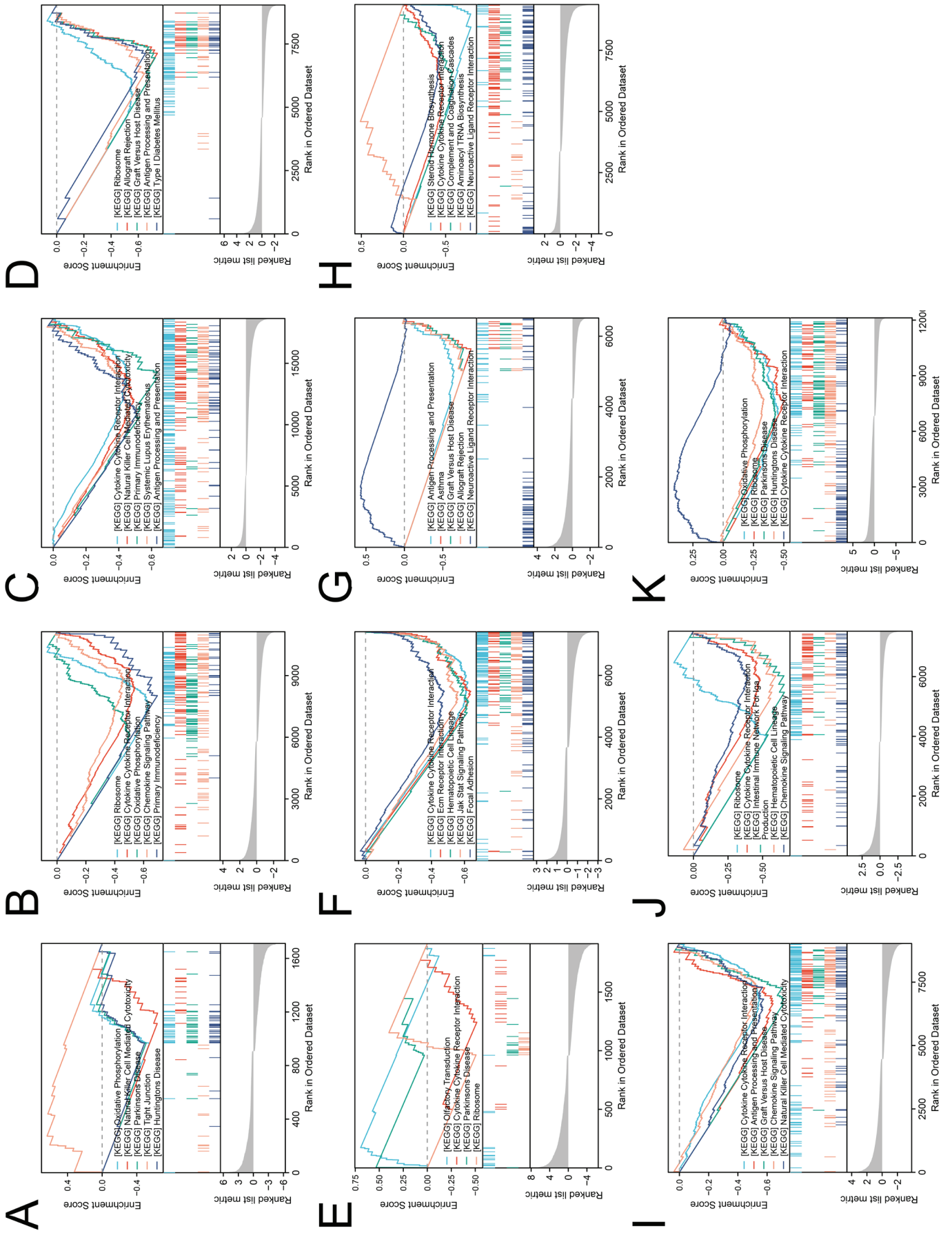
Supplementary Fig. 6. The correlation analysis between BMI1 and the efficacy of ICIs



Supplementary Fig. 8. The Metascap analysis of BMI1 in pan-cancers



Supplementary Fig. 9. The Reactome analysis of BMII in pan-cancers



Supplementary Fig. 10. The GSEA analysis of BMI1 in pan-cancers